

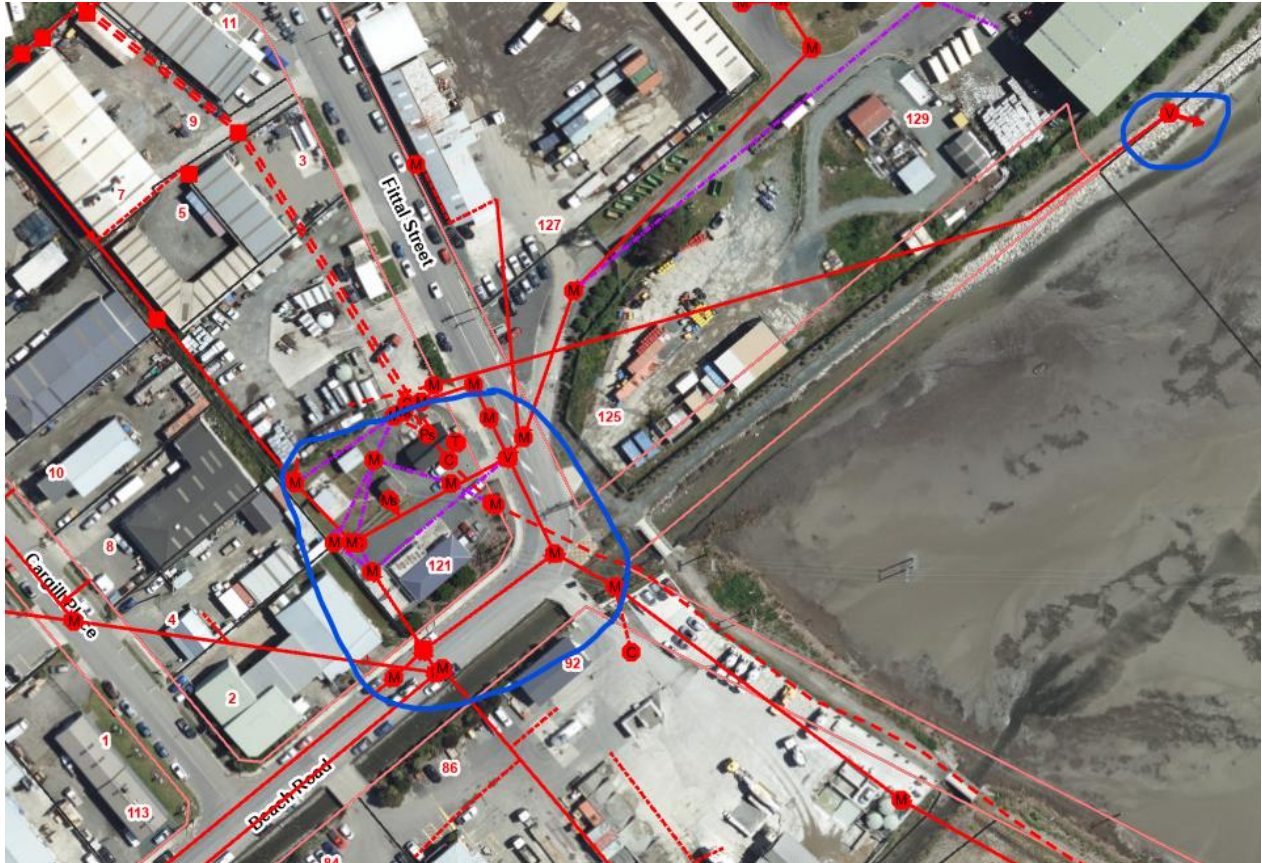
Council Sewage Spill Notification Form to the PHS (Block A)

Notifier	Juliet Westbury	TLA	Tasman District Council & NRSBU
Date of Spill	17 & 18/19 July 2021	Time discovered	
Date Notified	19 th July 2021	Time notified	
Phone 📞		Phone 📞	

Location and Cause: (Council may embed a map in this section or attach to email when form notified to the PHS)

This is an updated Overflow Notification for both the Tasman District Council Overflow from manholes on Beach Rd and Fittal St in Richmond, and from the Nelson Regional Sewerage Business Unit pump station overflow.

Inflow and infiltration, because of the heavy rainfall on Saturday morning, and again on Saturday evening into Sunday morning, led to the rate of wastewater entering the pump station exceeding the capacity of the NRSBU pump station. This resulted in wastewater backing up in the reticulation pipework, overflowing from the pump station overflow and eventually from Council manholes and gully traps at low points in the network (shown by the blue circles). The overflow from the manholes and gully traps went via the stormwater system to the nearby Beach Rd drain and then into the Waimea estuary.



The overflow was diluted by the inflow and infiltration and the ongoing rainfall.

Estimated Quantity	TDC:200m ³ 140m ³ NRSBU:540m ³ 385m ³	Estimated Duration	17 th 7.5 hrs 18/19 th 8.25hrs
Weather (delete one)			wet
Tide conditions at START of spill (delete one)			Rising
Is it a contact recreation area? (delete one) (Swimming, windsurfing, water skiing, paddle boarding, surfing etc.)			no

Is it a recreational shellfish collection area? (delete one)	no
Is sampling proposed? (delete one)	no
Are warning signs proposed (delete one)	Yes
Is a Public Health Advisory proposed (delete one) (A Council media statement that advises the public to avoid contact or take shell fish for human consumption from a recreational water area, due to a sewage spill)	Yes

Summary of any risk mitigation action to be taken by Council (Council to complete) **Block B**

Council may complete this block at the same time it completes **Block A** or subsequently following discussions with the PHS in the case of more complex spills.

The Beach Rd pump station currently only has one storm pump operating so this reduced the capacity of the pump station, resulting in a larger volume spilled. The second storm pump is expected to arrive in a few weeks.

The overflow on the 18 and 19 of July was possibly exacerbated by a partial blockage of the remaining storm pump, further reducing its pumping capacity. As there was only one operational pump, it couldn't be removed and cleared.

No sampling is proposed given the background contamination levels of the rest of the flood water and the significant dilution effect of the inflow/infiltration.

There is an on going programme to investigate and fix sources of wastewater network inflow and infiltration. The NRSBU are also continuing work on providing a second pipeline from the Beach Rd pump station to the Bell Island treatment plant which will provide significantly greater capacity and provide for future growth in the Waimea Basin. Once the pipeline is operational, overflows in this area should become infrequent.