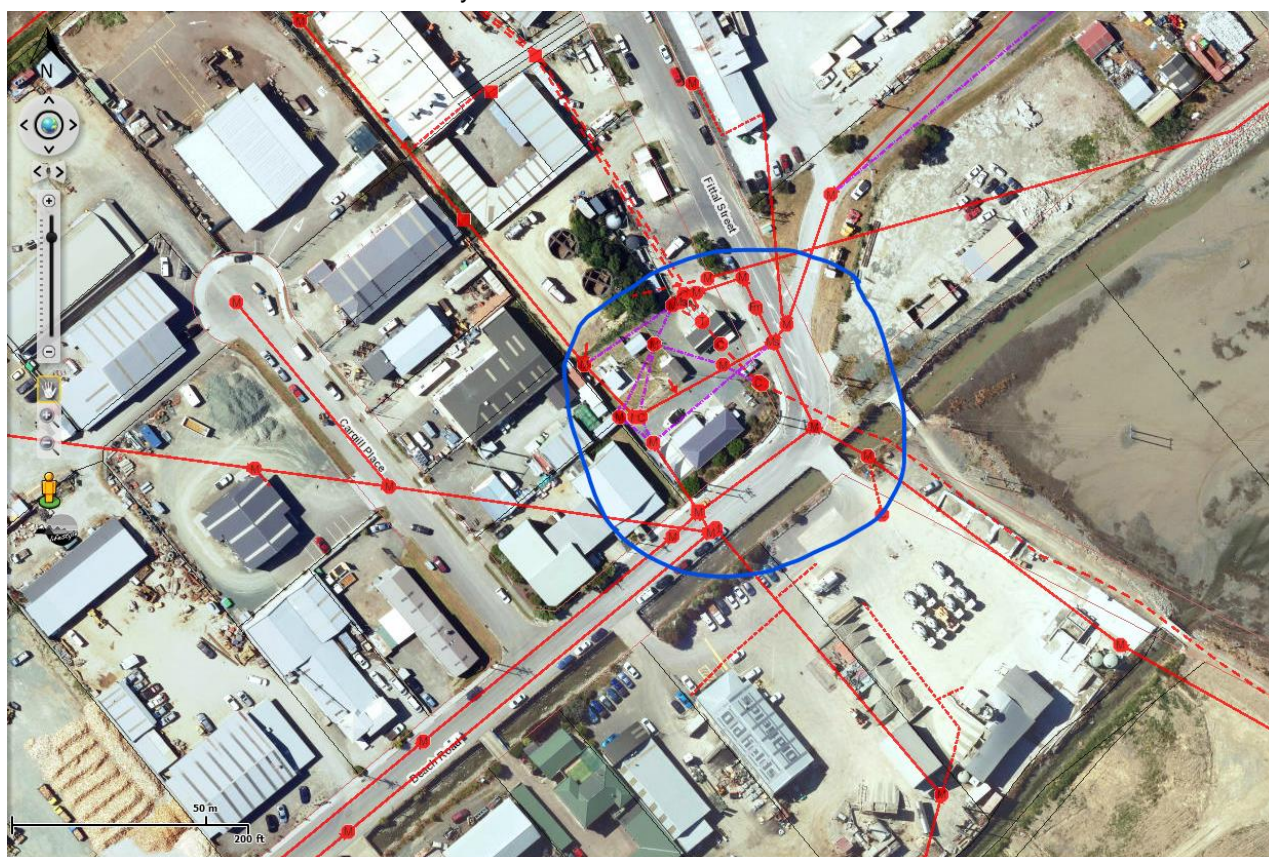


Council Sewage Spill Notification Form to the PHS (Block A)

Notifier	Graeme Fox	TLA	Tasman District Council
Date of Spill	17 th July 2021	Time discovered	7:30
Date Notified	17 th July 2021	Time notified	16:00
Phone 📞		Phone 📱	

Location and Cause: (Council may embed a map in this section or attach to email when form notified to the PHS)

Inflow and infiltration, as a result of the heavy rainfall this morning, meant the rate of wastewater entering the Richmond network exceeded the maximum possible discharge rate to the Nelson Regional Sewerage Business Unit pump station at Fittall St. This resulted in wastewater backing up in the reticulation pipework and eventually overflowing from manholes and gully traps at low points (manholes and gully traps) in the network (shown by the blue circle). The overflow went via the stormwater system to the nearby Beach Rd drain and then into the Waimea estuary.



The overflow was diluted by the inflow and infiltration and the ongoing rainfall

Estimated Quantity	200m ³	Estimated Duration	8 hrs	Ongoing (delete one)		N
Weather (delete one)						wet
Tide conditions at START of spill (delete one)						Rising
Is it a contact recreation area? (delete one) (Swimming, windsurfing, water skiing, paddle boarding, surfing etc.)						no
Is it a recreational shellfish collection area? (delete one)						no
Is sampling proposed? (delete one)						no
Are warning signs proposed (delete one)				Yes		

Is a Public Health Advisory proposed (delete one) (A Council media statement that advises the public to avoid contact or take shell fish for human consumption from a recreational water area, due to a sewage spill)	Yes	
---	-----	--

Summary of any risk mitigation action to be taken by Council (Council to complete) **Block B**

Council may complete this block at the same time it completes **Block A** or subsequently following discussions with the PHS in the case of more complex spills.

No sampling is proposed given the background contamination levels of the rest of the flood water and the significant dilution effect of the inflow/infiltration.

There is an on going programme to investigate and fix where possible sources of wastewater network inflow and infiltration.

This will reduce the number of events where pump stations get overwhelmed.