

PĀNUI

Hōngongoi (July 2018)
Issue #20



‘E TITIA’

*E titia nei e Te Ātiawa, i te iti, i te rahi, te katoa
To shine as Te Ātiawa, the few, the many, all of us*



Pictures from Waitohi Whare Mātauranga – page 4

TABLE OF CONTENTS

3	Ngā Tūtuhunga
4	Waitohi Whare Mātauranga
6	Chairperson's Report
8	CEO Report
10	Iwi Manuhiri to Te Ātiawa Trust Office
11	Noticeboard
12	Group Commercial Advisory Board Members
14	Resource Management Report
16	Historical Kōrero
17	Iwi Register
18	Waikawa Marae
21	Onetahua Marae
22	Te Āwhina Marae
24	Whakatū Marae
26	Takahe
28	Kaimahi hou
31	Friday Assembly at Waikawa Bay School
32	Grants and Sponsorships

Front Cover: Group Commercial Advisory Board Members

TE ĀTIAWA TRUST OFFICE

Postal Address:
PO Box 340, Picton 7250

Physical Address:
Beach Road, Waikawa Marina,
Waikawa, Picton
(Personal or Courier delivery only)

Free Phone: 0800 284 292

Office Phone: 03 573 5170

Office hours: 9.00am – 5.00pm
(Monday to Friday)

CONTACT US

Chairperson
Harvey Ruru
Email: chair@teatiawatrust.co.nz

Chief Executive Officer
Richardt Prosch
Email: ceo@teatiawatrust.co.nz

Registrations Officer
Noelene McEwen
Email: register@teatiawatrust.co.nz

Resource Management Officer
Email: rm@teatiawatrust.co.nz

Resource Consent Officer
Sylvie Heard

Office Receptionist
Pare Puketapu
Email: office@teatiawatrust.co.nz

Executive Assistant
Hattie Riwaka
Email: ea@teatiawatrust.co.nz



He hōnore, he korōria ki te Atua
He maungārongo ki te whenua
He whakaaro pai ki ngā tāngata katoa
Hangā e te Atua he ngākau hou
Ki roto, ki tēnā, ki tēnā o mātou
Whakatōngia tō wairua tapu
Hei āwhina, hei tohutohu i a mātou
Hei ako hoki i ngā mahi mō tēnei rā. Āmine.

*Honour and glory to God
Peace on Earth
Goodwill to all people
Lord, develop a new heart
Inside all of us
Instil in us your sacred spirit
Help us, guide us
In all the things we need to learn today. Amen.*

NGĀ TŪTOHUNGA

Dr Monique Gemmell and Dr Sharon Gemmell
Te Ātiawa, Ngāti Rarua, Ngāti Toa, Ngāti Kahungunu

Earlier this year mum and I graduated from Te Whare Wananga O Awanuiarangi (TWWOA) with our Professional Doctoral in Indigenous Development and Advancement. This was a momentous occasion for us and TWWOA. We were honoured to be the first graduates for this Doctoral and the first mother and daughter to graduate together with their doctorates.

Mums thesis discussed the role of the Māori Land Court and how they recreated the notion of kaitiakitanga in favour of European ideologies of land ownership. This ideology destroyed the mana of both - a taki to the whenua and the status of tangata. This created a system of knowledge based on Western concepts of land ownership, henceforth, ideals attributed to such ideologies.

My doctoral thesis challenges the ideology that Māori women were not powerful or knowledgeable, prior, during and after colonisation. Whilst colonisation worked hard to tell Māori women that they were lesser and inferior to Pakeha men, Pakeha women and more importantly – to us as Māori our own Māori men, we have survived the attempts of our colonisers and remain and continue to be powerful wahine who transit matauranga Māori.

Prior to gaining this accolade, our learning journey at Post Graduate level commenced in 2007. On this journey we both graduated together with our Masters in Education at Victoria University and a Masters in Māori Studies (first class honours) from Te Whare Wananga O Awanuiarangi.

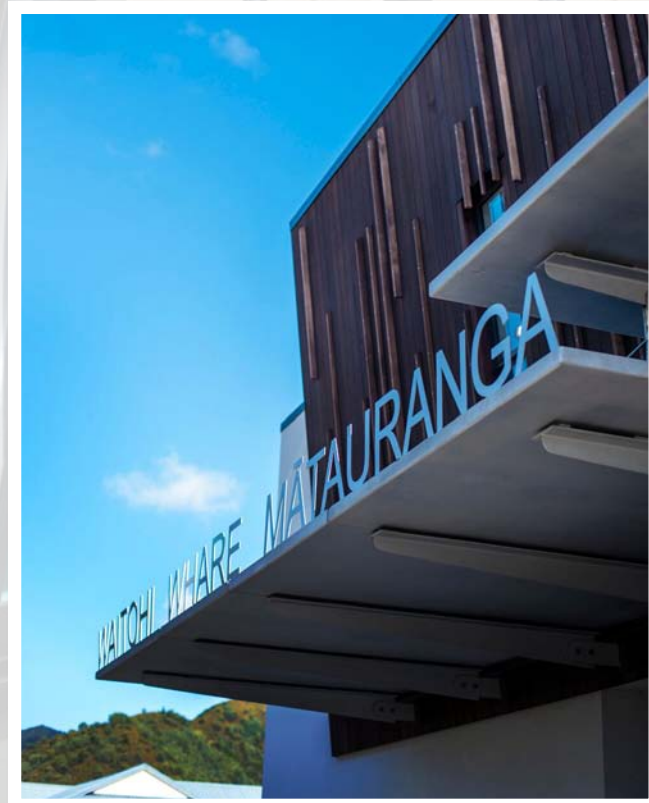




WAITOHI WHARE MĀTAURANGA

Historical Notes:

Picton was the first town in Marlborough to have a library, the doors of the new Picton Literacy Institute opening in December 1859, the year Marlborough was established as province.



The library followed the model of the Mechanics' Institute which, for a subscription membership, provided a small selection of books with a reading room for newspapers and magazines while doubling as a venue for music, book and play reading.

Initially run by a committee of residents, by 1902 the library was looking for Council support. An arrangement was struck in which the library would be publicly funded and the Institute would provide a small space for new council chambers. A year later building was complete and the Picton Library and Council Chambers were established on the Upper High Street location from where library and council would continue to serve the town.

The Library-Council buildings met the town's needs for three quarters of a century. But, after a debate which continued on and off for almost 20 years, it was agreed to replace the aging buildings, and a new Picton Borough Council and Library complex was opened in 1980.

Within the decade, after local government restructuring and Picton no longer a stand-alone borough, the Picton Library became a branch of Marlborough District Libraries.



Queen Charlotte College Kapa Haka



Kaumātua Joe Puketapu, opening the historical event.



From left: Whaea Bev, Ron Riwaka and Queen Charlotte College

Although initially knocked back by general financial downturn, in 2014 the Marlborough District Council confirmed the need for the upgrade.

In 2015, following consultation with Te Ātiawa (who played a major role providing input around tikanga), along with community group and key stakeholders, the location, concept plan and budget was approved.

Designed by Wellington architectural firm Athfield Architects, a modern library, reflecting the town's maritime history has emerged, more than doubling its previous footprint and stretching out from the Upper High Street spot where Picton's library has stood for so long.

The design pays homage to Te Ātiawa, with sun shades under the level of the roof shaped in the form of feathers, or paddles, in reference to a Te Ātiawa legend about albatross.

In 1994 the Council portion of the building was tenanted to Picton Medical Centre

Four years later the building was extensively altered so the library and council office could merge into today's Picton Library and Service Centre.

With Picton growing, redevelopment of the foreshore underway and tourist numbers increasing in the town, lobbying for a new library was underway, beginning with a public meeting in 2002.

CHAIRPERSON'S REPORT

Harvey Ruru QSM



Linda Sewell CEO One Forty One Plantations Australia to acquire Nelson Forests.
From left to right is Harry Ashby from Global Forest Partners, Harvey Ruru Chair Te Ātiawa Trust,
Linda Sewell CEO OFO Plantations Australia, Richardt Prosch CEO – Te Ātiawa Trust,
Lee Seymour Managing Director from Nelson Forests and Andrew Karalus, Estate Value Manager.

Heamana Repoata 2018

Kia whakakororia ki te Atua i runga i te teitei me te rangimarie o te whenua ki nga iwi katoa.

Ki te hunga kua uru atu ki te ao o nga Anahera, kia kaha haere taau tere ki te hunga e haere ana i tenei haerenga.

Ki te hunga e noho ana, ka kaha te tangata o to huatau i ta te hunga Ataahua o mua,

i tenei wa, i te heke mai, a kia tino kaha rawa o maatua whakaaro

Glory to God in the highest and on earth peace goodwill towards all people.

To those who have entered the heavenly realm of angels, may your spiritual journey be enriched with those whom are also travelling this journey.

To the living may the blessings of those beautiful people of the past, present and future also journey with us and be utmost in our thoughts.

Manu Korero Te Tau Ihu Schools Speech Competitions

Manu Korero Te Tau Ihu Schools Speech Competitions Waimea College, Richmond Friday 25th May, 2018.

Te Ātiawa Trust Awarded the Manu Korero Taonga Tohora Niho which was awarded for the first time to Pharaoh de Thierry daughter of Janis and Anthony de Thierry, Nelson.

We also awarded \$500 to divided up amongst runner up recipients.



Group Commercial Advisory Board Members:

Dr Brendon Puketapu: Ph.D; Med (Hons); BEd; Advanced Diploma Teaching; Diploma Bilingual Teaching; Trained Teacher Certificate; Diploma Teaching; NZ Institute of Directors

Phillip Jacques: BSc; Dip Mgt; Dip Acc; Chartered Accountant

Lennox Love: BComm & Admin; Institute of Chartered Accountants; Chartered Accountant

Mark Barcello: 25 years relevant experience in the fishing industry and fishing quota owner

Murray J Paul: Qualified Builder; Senior Property Consultant (REAA Licensed Agent)

Richardt Prosch: CEO Te Ātiawa Trust; MBA(Majors Marketing & Strategic Management); BA(Hons) Business Administration; MSc; BSc(Hons); BSc

Venessa Ede: Graduate Diploma Business Studies, BComm + Admin (BCA) Institute of Chartered Accountants; Associate Chartered Accountant.

The huge commercial wealth of knowledge all the above esteemed Commercial Board members bring to ensure in the words of our Te Ātiawa Trust Kaumatua Joe Puketapu "to bring Te Ātiawa Iwi from a \$2 shop to a \$Billion entity" is quite a task to set our vision not only for the next 50 years but the next 500 years.

Dr Sharon Barcello-Gemmell MNZM: Huge congratulations to Dr Sharon not only on receiving her Doctorate of Philosophy but also being the recipient in the 2018 Queens Birthday Honours as a "Member of the NZ Order of Merit".

Dr Monique Gemmell: Also huge congratulations to Dr Monique. Nga Mihinui Korua Dr Sharon and Dr Monique.

Nā Archdeacon Emeritus Harvey Ruru QSM
027 348 9715

CEO REPORT

Nā, Richardt Prosch

From the CEO's Desk

Mā te hoe tahi ka ū tō tatou waka ki tahaki

If we row in unison, our craft will reach the shore safely

I am writing this as the wind is howling across Waikawa Bay and our ski fields are preparing to open for the season.

The financial year would be completed when you receive this Pānui. Another eventful and productive year.

I will touch on a few highlights:

Staff Appointments

We are delighted to have Pare and Hattie on board. We continue to build capacity and they will strengthen the team, both in an operational sense and also tikanga Māori .

Following the departure of Bruno, we were fortunate to enlist the considerable talents of Ian Shapcott (Shappy) our previous Rohe Manager.

Group Structure

After a nearly two year investigation and utilising a number of internal and external experts in their field, the Trust Board has ratified a new Group Structure. This was based on safeguarding our assets long-term, reduced liability for present and future Trustees, simplicity, operational efficiency and tax effectiveness. Although the Working Group tasked with investigating various options had a blank canvas, the decision was taken to retain our two Trusts and conduct our commercial business through a Limited Liability Partnership and Trading Divisions via the Te Ātiawa O Te Waka-A-Māui Trust.

Our Charitable Trust will continue to be utilised for our Educational, Sport and Cultural initiatives, Marae Support, Whakapapa research & Registrations and Resource Management initiatives.

This structure is in line with the latest conventional wisdom and utilised by a number of Iwi organisations. To fully implement this structure a number of Constitutional changes would be necessary and as always the whānau will have a say and vote on this.

Commercial Activity

Property Division

Our property portfolio was expanded with the purchase of the sites on which Picton School, Queen Charlotte College, Fairhall School, Havelock School and Springlands School reside. In addition the Nelson Police Station site was added to our property portfolio. These were properties earmarked in our Settlement Deed and acquired at competitive prices.

These sites will give us a low risk long-term income stream with the Crown as tenant. Of course redevelopment is always an option when one of these institutions move as most of the land is classified as urban residential or commercial.

Commercial Board

Our Commercial Board members have been appointed by the Trust Board and we are fortunate that our whānau have stepped forward to assist us in realising our commercial targets. We are entering an exciting phase where we need to expand the commercial base and this Advisory Board will complement the Trust Board and Operations. In an ever increasingly complex commercial world these members will play a crucial role in our economic wellbeing.

Aquaculture & Fishing

After a number of years of negotiating and contributions by a number of our whānau, the new aquaculture water

space in Golden and Tasman Bays is close to being realised with the formation of Governing and Operational Structures. These ventures are settlement assets and as such will be managed, at least initially, by all eight Te Tau Ihu Iwi. This space will be developed over the next +-10 years.

We have added a new mussel farm in our existing space at Oyster Bay, Tory Channel to add to our existing portfolio. Our management functions have been expanded to include all our Joint Venture Farms. Hence, we now manage all our own and Joint Venture Farms, leading to better yields and decision making.

Our fishing & aquaculture company Totaranui has had another excellent year with good returns on both marine farms and Ace sales (the yearly fishing right based on the quota amount you own). Where possible we prefer our whānau to participate in the fishing effort, for example our Paua ACE is being caught by whānau.

We also welcomed whānau member Jordache Jones as a Fishing and Aquaculture Associate to build capacity. Together with our Cadetships on offer we hope that soon our whānau will be in a position to take ownership of these assets.

Forestry & Forestry Land

Despite losses incurred in our jointly owned Motueka land during the Gita cyclone, this portfolio continues to perform well with significant higher rentals negotiated in our prime forestry land in the Rai Valley and Golden Downs West.

Financial Portfolio

Our international investment portfolio continues to perform well despite uncertain world political events. This portfolio gives us exposure to world markets and complements our other assets.

Educational, Cultural & Sport Funding

We continue to support a large number of our whānau at both secondary and tertiary level. Although the Trust funding for this important task is continually increased, we realised that the need is too great to fully fund from internal resources. To this end we have a number of partners assisting us resulting in significant extra available funding.

In addition to educational bursaries we also assist our whānau with sport and cultural grants. These are very popular and assist many across diverse activities.

We will feature articles profiling our recipients in our Pānui and Website.

Marae Funding

Our commitment to see our Marae prosper remains unwavering. To this end we have Trustees actively support our Marae and my Office supporting where needed.

The Trust Board approved funding for a full time Waikawa Marae Administration & Finance Manager with a grant over three years. It is envisaged that this person will provide invaluable assistance to the Marae Trustees and Management Committee Members.

Marae funding has also been increased in our 2018/19 Budget.

Communication

To keep our whānau updated about services, events and what is happening remains an important task. To this end we have a 'new look' Pānui and new Website. Your feedback and input remains an important part of this process. Tell us what you want and we will incorporate it into our Communications Strategy.

Tell us what is happening in your community, share information about interesting events or achievements. We would love to share this with the whānau.

Whakapapa

Our registrations continue to follow a healthy pattern keeping all busy.

John and Hillary Mitchell were commissioned to conduct important research and the completed work is being peer reviewed. Once this is completed the research will be considered by our all-important Whakapapa Committee who continue to work tirelessly in this space. It is envisaged that this work will contribute towards a better understanding of Te Ātiawa whakapapa.

Resource Management

Our Rohe Managers (Shappie and Sylvie) together with Daren remain very busy with Resource Consent Applications, input into Council Long Term Plans and engaging various Crown Agencies and members of the Public upholding our Kaitiaki status in the Rohe.

*Ngā mihi, nā,
Richardt*

IWI MANUHIRI TO TE ĀTIAWA TRUST OFFICE

Waikawa Marae Trustees and members of the Waikawa Marae Executive Committee joined the Te Ātiawa Trustees at the Trust office to korero on a glorious summer Waikawa day in December 2017.



Rear Left to right: Buna Riwaka (Waikawa Marae Executive), Larry Riwaka (Waikawa Marae Executive Chair) Trustee Ron Riwaka, Rita Powick (Waikawa Marae Trustee Chair), Trustee Harvey Ruru, Trustee Harry Love, Trustee John Katene
Front Left to right: Marama Burgess (Waikawa Marae Trustee), Dawn McConnel (Waikawa Marae Trustee), Trustee Vennessa Ede, Trustee Cindy Batt.



Beryl Bowers – Visited the Office about Matariki Festival that will be held in Picton over June and July



Raymond Lee and Simon Hoey- Burns from Crowe Horwath – On 7th of June our office was visited by 2 of Crowe Horwath staff members, when we were, introduced to our new accountant Raymond Lee and to also say 'Haere rā' to Simon, who has been working alongside Te Ātiawa Trust for just over 3 years. We wish you well, on your new journey to America Simon. Ngā manaakitanga I runga I a koe and to you Raymond Nau mai haere mai – Welcome to the team.

NOTICE BOARD Calendar Dates

1 July 2018 to 31 July 2018	2018 Education Grant Open Reminder that the applications for this Grant will close at 5pm on Tuesday 31st July 2018. If you have not already requested or received an Application Form, please email register@teatiawatrust.co.nz
1 July 2018 to 30 June 2019	2018 / 2019 Culture, Arts & Sports Grants Application Forms for the new financial year available by emailing register@teatiawatrust.co.nz
Sunday, 25 November 2018	Annual General Meeting, Waikawa Marae, Waikawa Further details will be included in the pānui scheduled for October 2018.
Friday, 14 September 2018	Te Pātaka o Wairau Night Market will be held on Friday 14 September, 4-9pm at Seymour Square in Blenheim. The market coincides with Te Wiki o Te Reo Māori 2018 and so we're sharing the theme - Kia Kaha te Reo Māori! This event is held under the Korowai of Manawhenua Iwi, Rangitane o Wairau, Ngāti Rarua o Wairau and Ngāti Toa o Wairau and is open to everyone to attend. Nau Mai Haere Mai! If you are interested in having a stall please email tepatakaowairau@gmail.com or call Te Ra Morris on 021943983
Moorings	Te Ātiawa Trust Office has a Mooring vacant for anyone who is interested. Please contact our office on (03) 573 5170
Te Ataarangi – Waikawa Marae	Te Ataarangi Te Reo Māori classes are held at Waikawa Marae every Friday from 6pm to 8:30pm. For anyone who is eager to learn Te Reo Māori me ōnā Tikanga.
Outward Bound & Aoraki Bound	Te Ātiawa Trust is looking for 2 applicants to participate in Aoraki or Outward Bound. If this sounds like you, please read the criteria on page 34. Call the office for further information (03) 573 5170



GROUP COMMERCIAL ADVISORY BOARD MEMBERS



Mark Barcello

Since 1993, Mark has performed admirably in the role of fishing quota owner, deepening his knowledge and practical experience of New Zealand's fishing industry, including its statutory policies. Mark takes pride in having built from scratch a successful deer stud farm that has won several national velvet competitions and has also had the pleasure of owning and developing various vineyards in Marlborough over 20 years, as well as creating an award-winning restaurant. Mark is a highly motivated and enthusiastic fishing quota owner of 25 years relevant experience in the fishing industry. Mark was also a Significant Board of Trustee member for Bohally School, Marlborough.



Dr. Te Tiwaha Brendon Puketapu

(Director for Atihau Whanganui Māori Land Incorporation / Chair for Audit and Risk Committee)

Brendon has been a self-employed consultant for the past 10 years. Brendon has successfully completed work for private sector, public sector and non-government organisation, including Statistics NZ, the Ministry of Education, the Whanganui Iwi Education Authority - Te Puna Mātauranga o Whanganui and Māori Social Service Provider - Ngā Tai o te Awa Trust. Brendon has had direct involvement with the negotiations and completion of the Whanganui River Settlement.



Lennox Love

Lennox is a Chartered Accountant. He has a range of experience within iwi, private and public sectors in various governance and management roles. He grew up in Waikawa and is keen to grow Te Ātiawa with a balanced approach.



Murray Paul

Independent Consultant (Property HB Ltd)

Vast experience and knowledge in Commercial Real Estate with the interpretation, drafting and executing of Contracts, Agreements and Leases. Qualified builder, predominantly in the Commercial and Industrial building Sector. Experience and knowledge of Resource Management and consenting issues. Consultancy Services Murray provides are focused around Commercial Real Estate development, Asset Re-development, Investment Strategy, Asset Management, Resource Issues and Application and Interpretation and negotiation of contracts.



Phillip Jacques

(General Manager Corporate Services / CFO WorkSafe New Zealand)

An experienced Chief Financial Officer who successfully managed the investments of the Natural Disaster Fund for over 9 years. Researched, designed, developed and implemented processes/procedures to incorporate the Government's requirement that EQC manage its investments in a manner so as to avoid damaging New Zealand's reputation as a responsible member of the world community. Developed expertise in investment management, analysis and reporting through completion of the Euromoney Investment Management School held at the University of Cambridge, England. Phillip has also over more than 35 Years' experience as a general aviation pilot



RESOURCE MANAGEMENT REPORT

Nā Ian Shapcott & Sylvie Heard RM Team

Generally

With Bruno Brosnan now based in Nelson and involved in new mahi, Shappy (Ian Shapcott) has returned to support the Rohe Management Team for an interim period. This follows on from a 6 month contract which involved Shappy in drafting and presenting evidence, on behalf of Te Ātiawa, to the Hearings Panel for the Proposed Marlborough Environment Plan (MEP). This MEP work built upon the original 27 page submission lodged by Bruno earlier in the process.

Shappy is pleased to be back supporting his old friends at Te Ātiawa and working with colleague Sylvie Heard, and is daily coming to terms with the expanded challenges to be faced in the post-Settlement World, particularly since the Trust's Waikawa Rohe Management Office has picked up the work formerly undertaken by Tiakina Te Taiao in Whakatū (Nelson) and Motueka (Tasman).

RM team member Daren Horne has been proving invaluable cultural advice, and is capably representing the RM Office on a number of council working groups.

Totaranui (Queen Charlotte Sound) Rohe

Sylvie has been working with MDC on the review of the Reserves Management Plan for Victoria Domain, with the process about to begin the formal consultation phase.

Te Ātiawa has been working with MDC on an MFE funded project about the characterisation and water quality of both Waitohi and Waikawa streams. It is hoped to step off this project with pilot work for freshwater cultural indicators for these awa in collaboration with MDC.

The New Picton Community Hub / Library was opened by Marlborough Mayor, John Leggett, on Friday, 8 June 2018. Members of the iwi attended and were involved in tikanga aspects; images follow.



Joe Puketapu and Bev Maata-Hart supported Te Ātiawa tikanga at the library opening



Trustees Ron Riwaka and Harry Love attended the Library Opening



The Haven at dusk

MDC - Applications for Resource Consent

The RM Office is heavily involved in resource consent consultation within the Totaranui Rohe. Recently the RM Office was approached on a retrospective resource consent application where considerable track work had been carried out at Kahikatea in Totaranui. The application was opposed, due to inadequate consultation and the RM Office will be taking part in a walkover of the area with an archaeologist, to determine if there has been any damage to cultural sites in the vicinity. Initially, the applicant carried out works on poor advice but has been amenable to addressing the concerns of Te Ātiawa.

Whakatū (Nelson) Rohe

Te Ātiawa has a continuing and substantial role in the Iwi Working Group (IWG) involved with the drafting of the Proposed Nelson City Plan – a review of the current Plan. This work has recently concluded, and, Te Ātiawa, along with other involved iwi, are now engaged in a cultural peer-review of the entire document, prior to it being released for public consultation; a very sound step by NCC.

NCC - Applications for Resource Consent

There have been few applications of interest to Te Ātiawa processed through the Nelson City Council since our last pānui. The small number of applications we have been involved in relate to new dwellings and repairs to rock protection including works at Monaco Foreshore following recent storm damage.

Motueka (Tasman) Rohe

The RM Office has been working extensively with TDC in recent months, involving strategic planning for storm

water and solid waste management, and the review reserves management plans. Work has also included impending RM Plan changes, hui around TDC Capital Projects, hui with the Waimea Estuary Group and extensive cross-department liaison.



A Tasman Bay morning

TDC - Applications for Resource Consent

Tasman District Council continues to process many resource consent applications of interest to iwi. With many known areas of historical occupation, and already identified cultural sites at risk, it is important to ensure that the values of Te Ātiawa are accounted for by both the decision makers and applicants. The RM Office, along with our cultural advisor, recently met with the TDC resource consents manager to discuss improving the methods by which iwi are alerted to resource consent applications in the rohe. This advice was received positively by TDC and will assist with the ongoing input from the RM Office.

Rohe Management Office – June 2018



HISTORICAL KŌRERO

Nā, Mike Taylor

Types of Clay and Their Uses

Kokowai:- Kokowai or Red Orche mud had to be mixed with Stingray or Shark oil mixed in with it, the reason for this was to hold the red colour. Kokowai was used as paint for the front of the Wharetupuna and the Ihu mete (bow of a waka).

Paramu:- The blue or Paramu mud was used for cleaning of fire places, the old people used to make a bowl out of the lower part of the Punga tree. The inside of the bowl was sealed with Paramu, it would not leak for years. The water would stay clean and pure, that is how they kept this mud so well for a long time.

Pungapunga:- Pungapunga or yellow clay had to have flax root put into the clay, then boiled for a few hours, so as to hold the yellow colour.

Para:- Para or black swamp mud, this had to be soaked with Hinaiu tree bark, this was pulped then added to the Para, again to hold the colour.

From Kaumatua James Kura Te Au Keenan's recollection's:- We had a particular spot we used to call para or paru, it was a black mud which had a funny smell. In these particular areas you could poke a 9 to 10 foot pole and poke it down in these spots where the mud was and you would not touch the bottom, they were quite deep. They used that to dye the harakeke.

I remember my mother using the mud for cleaning the floor and fire place, in our two Māori Whare (house), in Tory Channel, these were made of Raupo (Swamp reeds) and the roof thatched with reeds called bull rushes, they were very warm houses, they were used when Keni and father were fishing.

Riwai Keenan's Fishing Whare at Te Awaiti, Tory Channel

One of the places I remember Mrs Puhi Huntley and others went to get Para, was at the end of Ranui Street, Waikawa. However, this was bulldozed when the street was extended by council. Another was over near where Watkins had a camping ground on the west side of Waikawa, now all reclaimed for the Marina, which also destroyed a valuable kaimoana ground. Mrs Huntley also had a site in the Para Swamp, Waitohi Valley, where she gathered Harakeke, Para or Paru, and Hōhere (Lacebark), just taking a strip of bark off a portion of the tree so as not to ring bark it. She then used her sharp mussel shell to strip the inner fibre, thus separating this from the outer bark. The fibre was then used for Poi and tarniko for the women's cultural party's bodice's.



IWI REGISTER

Kia ora,

I have recently started looking into my whakapapa, which led to my arrival in Picton on the 17th of May. It was early morning and I walked down to the waterfront and watched the sun creep over the hills of Marlborough Sounds. It was a beautiful morning to be followed by an incredible day.

I had arranged to meet Mike Taylor at 10am and didn't have much idea what was about to happen or any expectations. My mind was blown away with the kindness, time, energy and knowledge that Mike openly shared with me about who I am and where I come from. He knew all about my tupuna, and their stories, and he had his own journey with accumulating all this knowledge which was a joy to become a part of. It's a true treasure to have people like Mike doing the mahi he does for all of our people.

After our morning together, we headed out to Te Ātiawa Trust, here we met Noelene. She copied and scanned and compiled a bunch of information for me and got me registered, and I felt like I was in the right place with right people and just really at ease. She does amazing work for our people too, and I was amazed by how accommodating, and open everyone was being. I was lucky enough to buy a John Mitchell book, something I have always wanted since I saw him talk at a fundraiser in Golden Bay a few years ago, which has more information about my whānau.

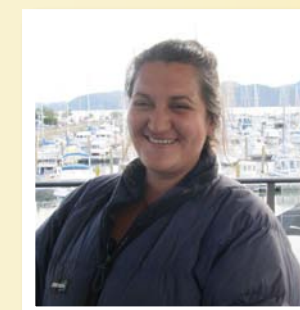
Later that afternoon, I met with Rita Powick at Waikawa Marae. This was really special, and she told me the stories

of it being built and the stories of the poupou. She shared with me what it was like to grow up in Waikawa, and how things have changed over time, and how we are all connected, which was really beautiful. I spent the night talking with Rita and Tom about numerous topics regarding whānau, marae, and our environment which was very insightful. After a sound sleep at Rita's, I was off to Laura Bowdler's. It's amazing to meet more kind, and loving family and look over photos of our ancestors and to hear stories about them.

My visit was almost coming to an end, not before a brief hug and hello with Dawn McConnell, better known as Petsy. Noelene was kind enough to be transporting me back and forth between Waikawa and Picton, so we headed back to Picton where I went to check out the Museum. Finding out about what it was like when my ancestors were living there, this too was a hub of information. I caught the ferry just after lunch the day after my arrival, and felt overwhelmed with joy, appreciation and love.

During my brief time in Picton and Waikawa, I felt connected to this place, and the beautiful people I met. I'm so thankful to everyone for making this journey so precious.

Nga mihi
Maddy Arms-Harris





WAIKAWA MARAE

Nā, Dawn Reeves

Manu Kōrero School Competition held at Waikawa Marae Monday 14 May

Mihi ki te kaupapa

Ki tō tātou kaupapa, kei te mihi

E kīa ana te kōrero

Ko ngā kaupapa katoa o te ao Māori

Ka whakairihia ake i runga i te tāhu o te whare

Ki reira tū mai ai hei tauira mā tātou

Nā reira, kia piki atu te titiro ki te tāhu

Ki reira tiki atu ai i ō tātou kōrero

Hei whakawhirinaki i te kaupapa

Nāna nei tātou i whakahui

Kei ōna heke ngā kōrero taheke iho

Kei ōna pou ngā matua o te kaupapa

Kāti rā e te kaupapa, tēnā hoki koe!

To the subject of the day, I greet you

It has formerly been said

That all topics within the Māori world

Can be found hung up on the ridgepole of the house

There to stand as the example to be followed by us

Therefore, let my gaze move upwards to the main beam

There shall I fetch my words

That the subject under discussion may be secured

For it has called us together

Upon its rafters shall the discussion descend

Within its posts shall its framework be found

Enough, the subject I greet you!



Ngā Manu Kōrero is the Māori speech competition for secondary students. The competition encourages fluency in Te Reo Māori and English. It began in 1965 as the Korimako Contest, and commemorates Dr Pei Te Hurinui Jones, a Waikato elder and scholar who died in 1976. The national secondary speech contests are now entering their 53rd year. The finals will be hosted by Ngā Manu Kōrero 2018 ki Te Tai Rāwhiti at Houhoupiko Events Centre, Makaraka, Gisborne on Tuesday 18, Wednesday 19 and Thursday 20 September 2018.

Competitors, whānau, kaumātua, students and teachers gathered at Waikawa Marae for the Manu Kōrero School Competition.



Back Row: Erin Bunt Nō Te Ātiawa, Ngāi Tahu; Mihi Campbell Nō Tūhoe; Soraya Timms Nō Ngāi Tahu; Daniel Matthews Nō Ngāpuhi; Mihi Raj Nō Ngāti Ranginui; Riita Bureka Nō Kiribati; Elijah Murrell-Manu Nō Ngāti Porou, Ngāti Kahungunu, Cook Islands.

Front Row: Aria Shallcrass Nō Ngāti Porou; Takkera Galvin Nō Pākehā.

Beneath the tāhu of the whare, Arapaoa, was the perfect setting for Kuini Harata/Queen Charlotte College students to hold this kaupapa. Waikawa Marae and Kuini Harata have a strong relationship and the Marae is an extended classroom for students at the College. Year 7 students and their teachers attended the speeches so they could watch and learn from their tuākana. The orators were excellent role models for these young minds.

Seven junior and two senior students competed in this year's competition. They were competing against each other to represent the College at the Regional Manu Kōrero Competition.

Judges were: Rita Powick, Chairperson Waikawa Marae, Bev Maata-Hart, Kaumatua Waikawa Marae, Sharon Alvey, HoD English Dept QCC and Megan Bruce, Senior English Teacher and Careers Officer at QCC. Joe Puketapu, Kaumatua and presenter, opened and closed the hui.

All students entered in the English Section and had a choice from ten topics. Each orator had their own strengths and personalities and it was awesome to listen to their chosen topic. There was laughter, tears, nerves, and joy from both students and whānau throughout the day.

The students stood proud representing their whānau, iwi, hapū and the College and completed their speeches.

The judges had a hard job judging the speeches but two students stood out and won their respective age group. Junior winner was Elijah Murrell-Manu and senior winner was Erin Bunt. Well done to all students who participated in this kaupapa. Even though they were competing against each other their manaakitanga and whanaungatanga towards each other was exemplary.

Erin, Elijah and supporters travelled to Nelson to represent Kuini Harata at the Regional Manu Kōrero. The regionals involved secondary schools from the Top of the South Island, Te Taihū o te Waka a Māui. Erin got high commendations from the judges and Elijah won his section and brought home the Sir Turi Carroll Trophy.

The students embodied the Kuini Harata whakatauākī "Mā te whanaungatanga e ora ai te tangata mō ake tonu. Positive relationships are essential to lifelong learning" at both the School and Regional Manu Kōrero Competitions. Kia kaha Elijah, for the Nationals.

The students embodied the Kuini Harata whakatauākī "Mā te whanaungatanga e ora ai te tangata mō ake tonu. Positive relationships are essential to lifelong learning" at both the School and Regional Manu Kōrero Competitions. Kia kaha Elijah, for the Nationals.



Elijah Murrell-Manu and Erin Bunt



Elijah Murrell-Manu

The teaching of Te Reo Te Ataarangi at Waikawa Marae

Nō wai te reo e pōwhiri nei i ahau
Nō ngā tīpuna e.
Nā wai te reo i tuku iho e
Nā ngā tīpuna e.
Mā wai te reo e ora ai
Māku, Mā tātou, mā te motu e.

For whom is this knowledge for that greets me
From our ancestors.
Who can embrace this gift that's passed on
From our ancestors.
How do we keep this gift alive
For me, for you, for all of us living in this land.



Waikawa Marae would like to acknowledge the founders of Te Ataarangi, the late Ngoi Pewhairangi and the late Te Heikōkō Katerina Mataira for their work and dedication in creating this unique way of teaching and learning te reo Māori me ōna tikanga.

For over 35 years, Te Ataarangi has been at the forefront of Māori

Language Revitalisation. Te Ataarangi is well-known for the use of coloured rākau/rods as a learning tool. It's an effective language-learning technique that encourages you to speak.

Over the last year kaiako from Te Ataarangi ki te Taihū o Te Waka a Māui have been travelling over the hill to teach Rita Powick, Linda Ohia and Bev Maata-Hart so they can start classes at Waikwa Marae.

Te Ataarangi has five learning principles.

Kaua e korero Pākehā – Don't speak English.
The faces on the tauira/students showed horror and we were all thinking how can we be at te reo classes for 2 ½ hours and not speak English. Auē taukuri e! But with learning with the rākau this is easier than you think.

Kaua e poka tikanga – Be respectful of each other. During classes there is always laughter but tauira are laughing with each other. You sit there waiting for your turn to come. As each person has their turn you say it in your head and you are always right, but when it is your turn your mind goes blank!



Kaua e akiaki tētahi i tētahi – Don't prompt one another.
You think this is an easy rule but when someone is looking at you with pūkana eyes for help, and you try to nod your head so the kaiako can't see you! Or if you are twins and you start and finish each other sentences.

Kia ahu atu te pātai ki a koe, katahi ano koe ka āhei te whakahoki – Only answer questions which are directed at you. This gives tauira the chance to speak without any interruptions.

Kia ngakau mahaki tētahi ki tētahi – Be humble. Of the 5 learning principles this one is the most important. It incorporates the human values of truth, peace, harmony, right and proper conduct.

The classes are from 6-8.30pm every Friday night at the Marae. You can hear the laughter, singing and when everyone is concentrating on the mahi you can hear a pin drop. This kaupapa is an excellent way of learning and each tauira can go home and teach their tamariki, mokopuna and whānau. The kaupapa of Te Ataarangi is like the whakataukī of Waikawa Marae "Mōu, Mōku, Mō ngā iwi katoa – For you, for me, for all people.



ONETAHUA MARAE
Nā, Simon Walls, Secretary



During April and May the Marae whānau were involved in the hearings for a water conservation order over Te Waikoropupu Springs and the aquifer which feeds the main spring and nearby smaller springs. This process, set up much like a Waitangi Tribunal Hearing, was run by the Environmental Protection Agency. It was breaking new ground for us and no-one quite knew what to expect. A powhiri for the tribunal and team set the scene.

Each day was opened with a karakia from John Ward-Holmes before the five-member tribunal heard a range of submissions from Iwi, farmers, Fonterra, the District Council, Department of Conservation, TrustPower, Friends of Golden Bay and members of the public. Allowing everyone to present their evidence, either for or against the water conservation order, required at least ten days of hearings. John also closed each day with a karakia by which time we were all ready for a break. Early indications suggested that a large rift separated the for and against and discussions could become heated.



The application lodged by Ngāti Tama (and Andrew Yule, a local resident) became closer to reality when Ngāti Rarua and Te Ātiawa lent their support to it, cheered on by much of the Mohua community. A water conservation order is a high level of protection, but other options needed to be

considered, particularly ones which give Manawhenua Iwi more power in the decision making.

We were proud of the Manawhenua team as they presented evidence, in their kaitiaki role, of the great mana of the Puna and the associated underground water passages as an entire system. This is where lore meets law and for me it was very emotionally powerful. Many of us took the opportunity to be there to awahi Ngāti Tama who in turn managed to defuse the friction between opposing parties and create a conciliatory and cooperative process of refining the details of a draft order.

The Arthur Marble Aquifer is an amazing natural feature which cleans the water entering it, assisted by a community of underground lifeforms, delays water for decades, cools it down and supplies ultra-clear flow to the puna. There is also a tidal and saltwater connection with the sea. Despite the science presented by expert witnesses, there still seems to be some magic happening deep underground where we are unable to go. This is the realm of Huriawa and no-one wants to destroy it. A final closing of the hearings is yet to come, and maybe we will achieve the first ever W.C.O. for an aquifer in New Zealand.

It is hoped that the Water Conservation Order will set limits on pollutants entering the aquifer. It should also address the issue of over-allocation of water for irrigation and industry. This will have implications for farming, mining, forestry and power generation. In addition, the cultural and spiritual qualities will not be diminished which may affect the co-managers of the springs, the Department of Conservation.





TE ĀWHINA MARAE

Nā, Ann Martin

Brief updates

New Building for Te Piki Oranga Health Services.

Te Piki Oranga has increased its services to the Motueka/Golden Bay areas, and needs more space to house its staff and provide private consulting rooms at its Te Āwhina Marae base.

Earlier this year Perriams relocated a building on site & renovations began on Monday 11th June. It will provide a good sized kitchen/staff room, a meeting room & 2 more consulting rooms, & will be linked to our present Hauora complex by external decks. We hope TPO staff can move in in August.

Thanks to Rātā Foundation & NRAIT for financial support for this project.

Te Kapa Haka o Te Āwhina

Te Āwhina has answered the call to support Kapa Haka in Te Tau Ihu, and we are very proud of our group which has been putting in long hours to get themselves ready for the Regional Competitions on Saturday June 30th. Our contribution is special as it includes the history of Te Āwhina and the contribution especially of our beloved Auntie Mere Kingi who passed away in 2017. No more clues ... you have to attend to get the rest.

60th Birthday celebration - Te Āwhina (the Wharekai)

On Saturday 30th September we will celebrate this milestone with a wonderful dinner, & launch the 'History of Te Āwhina Marae'.

We look forward to hearing many more stories about events which have been hosted here during those 60 years – some of which may not be printable!!



New Building for Te Piki Oranga Health Services.



TE ĀWHINA MARAE O MOTUEKA



Matariki Open Day
Friday July 13th 2018

Nau mai, Haere Mai

This is an opportunity for you to come along and learn more about Te Āwhina Marae, the Mana Whenua iwi (Ngāti Rārua and Te Ātiawa), the carvings in our wharenui Turangāpeke, the histories and stories of our region, and Matariki.

Joy and Ngārangi will be your hosts.

10am Powhiri
(gather at the front gate by 9 45)

Kai Whakanoa (morning tea)
and lunch will be provided.

Finish by 2pm.

Cost: Koha (you give what you can)
which will be collected at the Powhiri.

As we are limiting the group to 40, we would like anyone interested in attending to
RSVP to info@tam.org.nz or phone the Marae office 03 528 6061, by noon on Wednesday July 11th





WHAKATŪ MARAE

Nā, Jane du Feu

Ngā mihi manahau ki te whānau whanui i raro i te manaakitanga o Te Runga Rawa. Tēnā tatou.

Here are some highlights over the last 2 months

- **Te Rourou Kura** have held 7 Noho since February at Whakatu in preparation for National Secondary School Kapa Haka Festival. This group is made up of Tauira from 7 Schools: Motueka High School, Waimea College, Nayland College, Nelson College, Nelson Girls College, Marlborough Girls College and Tuia Te Matangi Kura Kaupapa. The hours of commitment these Taiohi have put in is huge. So it has been awesome to see their growth. The Tutors have worked hard with this group to raise their standard to make us proud they are representing Te Tau Ihu o Te Waka a Maui at Nationals. The contingent departed on Sunday 1 July for Palmerston North, performed on Wednesday and returned to Wakatū on Saturday 7th July.
- We have had a number of Iwi/Whānau Hui exploring their journeys and whakapapa through Ngāti Koata, Wakatū Incorporation and whānau linkages.

7-8th June

- As some of you may be aware when the Wharenui Kaakati opened on 1 April 1995 one of our Pou was damaged but was installed with the view to replace it at some time in the future. This has finally taken place with the installation of the new Ngāti Kuia Pou at dawn on 8th June. The morning was very brisk but fine and the event went off without a hitch. It was great to have the Chair of Te Ātiawa Trust present as part of the celebration along with other Iwi Chairs and Ngāti Kuia whānau. Huataki Whareaitu, Kylie Nepia and Kereopa Ratapu led the process. A wonderful breakfast completed the process.
- In preparation for this hui the Mahau of the Wharenui was painted and is still being upgraded ready for when the new Maihi will be installed in the near future.

E ngā iwi o te motu nei

Oh people of the island

He raukura rā tēnei

Here is that plume

He titia nei e Te Ātiawa

Which is fastened to Te Ātiawa

I te iti, i te rahi te katoa

The smallest, but greatest, of all tribes

E ngā iwi o te motu nei

Oh people of the island

Nohoia rā te whenua nei

Occupying the land here

Manaakitia i ngā iwi

Blessed be the people

I te iti, i te rahi te katoa

The smallest, but greatest, of all tribes

Kua tū, kua tū, a Te Whiti

Hold on, hold on, to Te Whiti's way

Mō runga i ana mahi pai

Keep up his good work

Mō runga i ana mahi tika

Keep up his righteous work

I tōna ngākau pai.

And maintain his good heartedness

TAKAHE

Nā, Harvey Ruru

Takahe Translocation Kahurangi National Park Goulard Downs and Saxon Field



A team of DOC staff attended MKM to finalise the translocation of Takahe which began in August 2017 by MKM visiting Te Runanga o Oraka Aparima Marae southern most marae at Colac Bay near Invercargill to seek tono from the Runaka for the Takahe to be translocated.

Tuesday 20th March was the planned day for the delayed translocation to take place and to cause less stress to the 18 Takahe, only 4 will be sent to Onetahua Marae for an official welcome with the sponsors Air NZ, Fulton Hogan and Mitre 10 attending along with guests who were being brought in by boat and four helicopters for the ceremony at Onetahua Marae.

About to release the first 3 Takahe into Kahurangi National Park at Saxon Hutt site.

Te Rua Mason in high viz jacket Ngāti Waewae representative as Takahe were released into their boundary.

Jason van de Wetering from Te Anau, DOC principal liaison for the Takahe translocation, expressing sincerity of the moment after much planning in looking after these manu in preparation for this occasion.



Tuesday 20th March – Takahe translocation takes place with 7 helicopters and a chartered Air NZ plane from Queenstown to Christchurch and then to Nelson Airport. Air NZ charter plane landing at Nelson airport with 18 takahe aboard

Haere mai e te taonga manu ki tou whenua tapu
Haere mai, Haere mai



Pictured left to right: Jason van de Wetering - DOC Te Anau; Rakoa Bull Oraka Aparima - Colac Bay (near Invercargill) Ngai Tahu Runaka representative from Takutai o te Titi Marae and kaitiaki of the Takahe that were translocated to Kahurangi National Park; Te Rua Mason - Rangitira Ngāti Waewae who met us on their whenua at Saxon Hutt site of Kahurangi National Park.

**AIR NZ, FULTON HOGAN, MITRE 10, DOC,
ORAKA APARIMA RUNAKA, TE RUNANGA O
NGĀTI WAEWAE, NGAI TAHU TAA TIPENE
O'REGAN, TASMAN HELICOPTERS NELSON,
MANAWHENUA KI MOHUA**

**ME NGA KAI TAUTOKO TE KAUPAPA
NGA MIHINUI KI A KOUTOU TOU MANAKITANGA
TE TAONGA MANUTAKAHE**

All the birds released had electronic tracking devices attached and the latest news is that they're all doing very well in their new environment.



Ko te mihi tuatahi, kia tika ki te Runga Rawa.
Nāna nei ngā mea katoa, te timatanga me te
whakamutunga.

E mihi kau ana ki te hunga mate kua pahure
ki ngā kēti o Rangi. Haere atu rā, hoki atu ki
Paerau, okioki ai.

Kia koutou ngā kanohi ora, nēi rā ahau,
e mihi ana kia koutou katoa!

KAIMAHI HOU

Nā, Pare Puketapu

Ki te taha o tōku Pāpā:

Ko Te Atihauui a Paparangi ko Te Ātiawa ngā iwi
Ko Joseph Puketapu tōku Pāpā

Ki te taha o tōku Māmā:

Ko Rongomawahine ko Ngāti Porou ngā Iwi
Ko Haupai Mei Whaanga tōku Māmā



Ko Pare Puketapu tōku ingoa.

*I tipu ake ahau ki Koraunui,
Poneke. Kei Waikawa ahau e
noho ana.*

*Kotahi anake tōku tamāhine.
Rua tekau mā tahi āna
marama.*

*Ko Hawaiiki Puketapu-
Melterel tōna ingoa. Ko ia te
kuku o tōku manawa.*

I grew up in a tight knit community in Te Whanganui a Tara called Koraunui (Stokes Valley). Where I was born and raised under the supporting and loving guidance of my whānau, who have continuously supported me in all my endeavours.

Prior to moving to Te Waipounamu in 2014 I spent a few years in Australia where I worked as a labourer, Shop Assistant and Factory Worker. However, I realized there was "no place like home". I then returned home and decided to pursue my passion in Te Ao Māori and enrolled with Te

Wānanga o Aotearoa where I gained employment as a Kaiako for 2 years, then 1 year as Kaiwhakarite.

When the opportunity came up at Te Ātiawa Trust for Receptionist and Administrator, I decided I had nothing to lose and sent through my Tatai Pumanawa. 1 month later I was the successful applicant. I have been in this role now for a little over 4 months and it has been a great and challenging experience, learning a lot of new things to add to my Kete Mātauranga. This opportunity working with Te Ātiawa Iwi has given me the chance to work and give back to you all, Ngā uri o Awanuiarangi.

I am pleased and privileged to be a part of Te Ātiawa Trust and look forward to making a positive impact with Iwi, Hapū, Whānau and Hapori.

**Ngā manaakitanga,
Pare Puketapu**



Nā, Hattie Riwaka

Ko wai au

Ko Baw Baw te maunga

Ko Bunyip te wa

**Ko Hauāurupōta Pei te
moana**

Ko Paere te marae

Ko Jaques te hapū

Ko Ahitereiria te iwi

No Waitohi ahau

**Ko au te Kaiawhina Matua o
Te Ātiawa o Te Waka-a-Māui**

Ko Hattie Riwaka tōku ingoa

I first visited New Zealand in 2002 and met whānau from Wellington, Christchurch and Rotorua who would eventually become my in-laws.

It wasn't until early 2004 that I experienced the whenua and te moana of Waitohi, Totaranui/Queen Charlotte Sounds and Te Kura Te Au, and fell in love with the amazing beauty of the area and its treasures.

Later that year my hoa tāne and I were able to fulfil his boyhood dream, which was to purchase a house for his Mum in the area where she grew up, and for her to know she would always have a roof over her head and to be secure in a home she could call her own, and importantly she would be worry free in her golden years. The added bonus for Mum was she was able to live close by her beloved 'baby' brother, as he also lived in Te Waiharakeke with his whānau.

We were privileged to have both Mum and one of my sisters-in-law live with us for eight years before Mum's ill health eventually caught up with her.

I knew very little of the Māori culture until moving to Aotearoa, but I was fortunate to be nurtured and guided by the immediate and extended whānau who visited. I remember fondly the singalongs and the stories of the 'old days' of growing up at Waikawa Pa, and of the escapades and adventures of my tāne, his siblings and numerous cousins.

For me what was also special was that I was introduced to tikanga, Te Reo, Marae and Ratana by the local and extended whānau and the times spent on various Marae at different hui.

I have been lucky enough to visit Parihaka, and to meet and spend time with one of the most respected kuia from the

Pa. Aunty Poppy Bailey shared her stories with me, showed me her weaving and humbled me by showing me some of her mother's taonga. She reminisced of her younger days spent with her uncle – the Koro of my tāne. There was much korero and kai that weekend as we visited a number of the tamariki of Aunty Poppy. It was an extraordinary time, and we were also very lucky to have her visit us in our whare on a number of occasions whenever she came to Te Tau Ihu.

Arahura is another special place I was invited to experience with my tāne and each time I have visited I have felt the power and uniqueness of the awa. It is lovely to be welcomed so warmly by those at the Pa and the area itself.

We have a tamāhine living in Ōtautahi, and in Australia two tamāhine and a tama. Like the Papa and Mama of our Te Ātiawa mokopuna we feel that it is important for them to know their whakapapa and te Reo even though they live in a different environment.

I believed it was important for me also to expand my knowledge and use of te Reo.

Hence in 2015 I enrolled with Te Wānanga o Aotearoa and later that year was pleased to obtain my Level 2 Certificate in Te Reo Māori. It is just the start of my journey to improve, as one day I hope to be confident enough to have meaningful korero in te Reo with our mokopuna.



I have been proud to attend functions with my Te Ātiawa tāne, and to meet such people as the CEO and senior management team of NZ King Salmon, the Mayor of Marlborough, the well renowned chef Al Brown, along with kaumatua and others from Te Ātiawa, and other iwi.



The opening of the Waitohi Whare Matauranga, which I attended with some of the Trustees and Kaumatua, showcased not only the amazing whare, as well as the talent of Queen Charlotte College kapa haka group, but also the important manawhenua status that Te Ātiawa has in Te Tai Ihu.

I have worked for forty odd years in a number of various roles and industries both here and in Australia. I am skilled in many aspects of business. I have worked on a Ngāi Tahu pilot program, and have also worked on various occasions for Ngāti Rārua. I consider myself very fortunate to have been selected, after such a rigorous and robust recruitment process, to undertake the Kaiawhina Matua role.

I may not be Te Ātiawa toto but the Aunty of my tāne, told me on many an occasion that I carry the raukura in my heart always.



I look forward to being part of the Te Ātiawa o Te Waka-a-Māui Operations team that is working to ensure that Te Ātiawa will continue to grow in strength and will be able to provide cultural and sustainable opportunities for future generations. I am positive that the strong foundations laid by the past and present Trustees and staff, will be continued to ensure the growth and standing of Te Ātiawa o Te Waka-a-Māui and its people in Aotearoa, and beyond.

**E titia nei e Te Ātiawa, i te iti,
i te rahi, te katoa**



FRIDAY ASSEMBLY AT WAIKAWA BAY SCHOOL



The Friday Assembly at Waikawa Bay School on June 15th was special for some of the younger members of Te Ātiawa o Te Waka-a-Māui.

Following a Mihi Karakia and Waiata lead by the senior students, the school's Principal Mr Willem Lampe introduced Westpac Picton Branch Manager Shane Neal. Shane was at the assembly to make a special presentation to one of the students on behalf of Westpac and the Sir Peter Blake Trust – The Young Leader Award.

The Young Leader award celebrates a student who has:

- Integrity
- Determination and the will to succeed
- A good team builder, leader and member
- Is hard working and knows how to have fun

Sir Peter Blake is widely recognized as one of New Zealand's greatest leaders. He was a world-famous sailor, adventurer and environmentalist who never gave up on his dreams!

He is a great example of leadership, and how, through hard work and self-belief, you can achieve your dreams.

Although Sir Peter Blake isn't alive today, he wanted to reach every young person in every class room to help them believe in themselves.

Shane explained that Westpac are about growing a better New Zealand and working in the communities and inspiring the next generation of young Kiwi leaders.

The awards are in their eighth year and in 2018 600 Young Leader Awards will be presented.

At Waikawa Bay School, and in recognition of great leadership qualities displayed, the 2018 Sir Peter Blake Young Leader Award was presented to Tiana Childs.

Shane went onto explain that Tiana was the recipient of the award as she has the ability to instil in others a sense of wanting to go the extra mile to provide for the greater good of the school. Well done Tiana.

Also, another presentation at the assembly was to Maxi Love. Maxi was presented with the Student of the Week Trophy by Mr Lampe. This trophy is awarded in recognition of the recipient being a reflection of the Waikawa Bay School vision.

That is: Living & Learning the Waikawa Way:

- Be Honest - Kia Pono
- Be Kind - Kia Atawhai
- Be Respectful - Kia Manaaki
- Be The Best You Can Be - Kia Whakamiharo



Sports Grant Recipient Jake Koekemoer

Hi my name is Jake Koekemoer, I am 19 years old and in my second year of tertiary education at the University of Canterbury where I

am studying a Bachelor of Commerce majoring in Economics. I also represent New Zealand in Sprint canoeing.

Firstly I'd like to acknowledge the support that the grant gave me in 2017 in being able to allow my aspirations, dreams and talent in Canoe sprint to further develop. Due to your support I am able to focus on continuing my academic studies and my development as an Athlete and Person.

The grant that you gave me allowed me to attend the Junior and U23 world championship campaign for New Zealand in the discipline of Canoe sprint.

I Departed Auckland airport on the morning of the 6th of July 2017 and arrived in the capital of Slovenia, Ljubljana on the 7th. From here the team drove to Tolmin a small alpine town that lay on the banks of the Soci river, close to the Italian border. This is where the team was based for three weeks prior to world champs so that we could acclimatise and fine tune our performances before the world championships. In Slovenia I would have at least two, on water trainings a day and have a strength session every third day. In terms of development I felt like my teams were progressing and tracking well leading up to world champs. The time I spent in Slovenia leading up to worlds has given me valuable experience in how to prepare for major competitions and it has given me a better understanding of what is expected of me in a team environment for my sport.

We left Slovenia on the 24th of July to fly to Pitesti, Romania for the world championships.

At world championships I competed in the under 18 K4 500m. We placed 8th in our semi final and 19th Overall. I was dissatisfied with my placings at world champs.

This is due to the good lead up that I had with this crew when training in Slovenia, I felt that we were tracking very well and had a good chance at performing well at world champs but unfortunately it did not materialise on the day, which was incredibly disappointing. This disappointment has given me an extra drive to better myself day in and day out and hopefully allows me to better my personal performances at regattas of this caliber in years to come. I believe that this experience has allowed me to develop as an athlete and as a person due to the sharp learning curve of how to overcome great disappointment and not to dwell on the past.



This photo is taken at the World Championships in Pitesti. This is my K4 team. I paddle in position 4 in the boat at the back of the boat.

With the experience gained from this campaign trip I hope it aids my development up the high performance pathway for the foreseeable future. Since arriving back from Romania I had one week off training so that I could get over my jet lag and time to catch up on my studies at university, then I was straight back into training, in preparation for the open selection regatta held on the 22nd-23rd of September.

Thank you Te Ātiawa for the grant you gave me as it enabled me to continue pursuing my dream of a podium finish on the world stage representing New Zealand in Canoe sprint.

Regards
Jake Koekemoer

Cultural Recipient Daliah Clarke

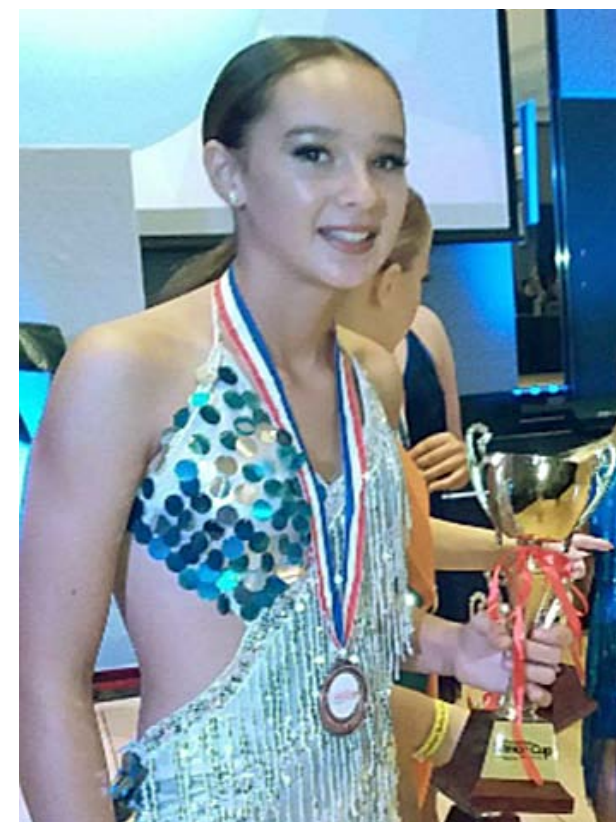
Daliah was part of the Studio HQ Dance Academy Gold Coast International team of 6 children, ranging from 10 Year to 17 years who competed in Australia in April.

Thank you for the grant I received to enable me to travel to Australia with Studio HQ dance group to compete for the Australia dance Cup.

We came back with eighteen trophies in Latin salsa and hip-hop dance and are now focusing on the next competition in Australia in November.

I am so proud to represent Te Ātiawa on my overseas competition and would be privileged to represent again this November and hope to encourage others with my possession.

Nga mahi nui,
Daliah Clarke.



**"Ko te manu e kai ana I te miro, nōnā te ngahere
Ko te manu e kai ana I te mātauranga nōnā te Ao"**

The bird that consumes the Miro berry owns the forest. The bird that consumes knowledge owns the world.

AORAKI BOUND & OUTWARD BOUND

Te Ātiawa is seeking to sponsor one candidate in each of the Aoraki Bound and Outward Bound courses in January and February 2019.

Aoraki Bound is for candidates over 20 years of age who are open to challenging themselves. An understanding of tikanga Māori, good vowel pronunciation, and a really good level of fitness will be essential for this course.

The course is 20 intense days, and fuses the knowledge of Ngāi Tahu with the physical focus of Outward Bound, bringing with it a world of knowledge, challenges, revelation, and intense group experience;

Outward Bound Classic Course is a 21-day course and is open for people between the ages of 18 years and 26 years. It gives participants the focus and perspective to decide on their future direction. One in four Classic participants reported the course motivated them to find work or start a new career, and 88% left with increased confidence and self-belief.

The Classic is the original and iconic Outward Bound experience, a perfect balance of adventure and reflection. You'll take time to consider your personal values and work out what's important. You'll find a sense of belonging, leaving Anakiwa with new connections and with a better understanding of yourself and your relationship to the wider world.

The criteria for both courses are :

- applicant must be able to run three (3) kilometres in under 25 minutes
- applicant must be a confident swimmer
- applicant must be able to participate in full day activities, eg. tramping for 7+ hours with a pack

If you believe you fit the criteria stated, please express your interest to Te Ātiawa Trust Office :

- Email : office@teatiawatrust.co.nz or Phone : 0800 284 292



REMINDER IWI REGISTRATIONS

Gentle reminder to Iwi to encourage your whānau to register with Te Ātiawa o Te Waka-a-Māui Trust. Why? Other than the peace of knowing that you are registered into the Iwi of your Tūpuna ki Te Tau Ihu, and receiving pānui on a regular basis, criteria for Grants and Sponsorships through the Trust stipulates that applicants must be registered. The Board of Trustees' have a mandate to especially encourage our rangatahi in training for their future employment and occupations, and also to support all Iwi in their pursuits in Māori Culture, Arts and Sports.

Please contact the Trust Office if you have any questions or would like to check the status of your registration, and / or to advise any changes within your whānau.

- Change of address, email address, phone numbers.
- Changes within your whānau, eg. births, marriages, losses.

Contact us on register@teatiawatrust.co.nz or 0800 284 292

TE ĀTIAWA MARAE CONTACTS



Onetahua Marae

Pohara Valley Road, Takaka

PO Box 113, Takaka 7142

Contact: Simon Walls (Secretary)

Phone: (03) 525 8332



Te Āwhina Marae

133 Pah Street, Motueka

Contact: Ann Martin (Tumuaki)

Email: info@tam.org.nz

Website: www.tam.org.nz

Phone: 03 528 6061



Waikawa Marae

210 Waikawa Road, Waikawa, Picton

Contact: Larry Riwaka (Chairperson, Marae Management Committee)

Email: waikawamarae@xtra.co.nz

Website: www.waikawamarae.com

Phone: 03 573 7547



Whakatū Marae

99 Atawhai Drive, Atawhai, Nelson

Contact: Katiana Maaka (Kaiawhina)

Email: Katiana.Maaka@whakatumarae.co.nz

Website: www.whakatumarae.co.nz

Phone: 03 546 9097



TE ĀTIAWA

O TE WAKA-A-MĀUI

